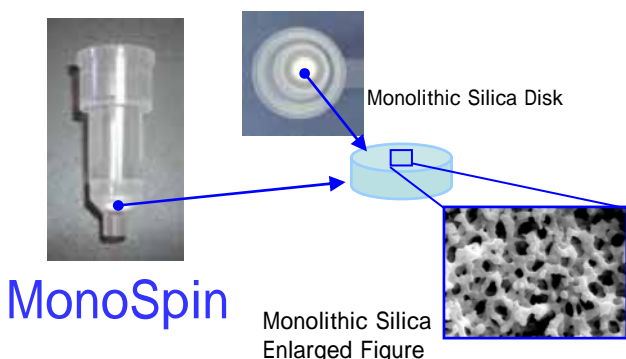


MonoSpin® Series

MonoSpin is a monolithic SPE column excellent for the small volume sample with an easy and quick operation by centrifuge.

Features:



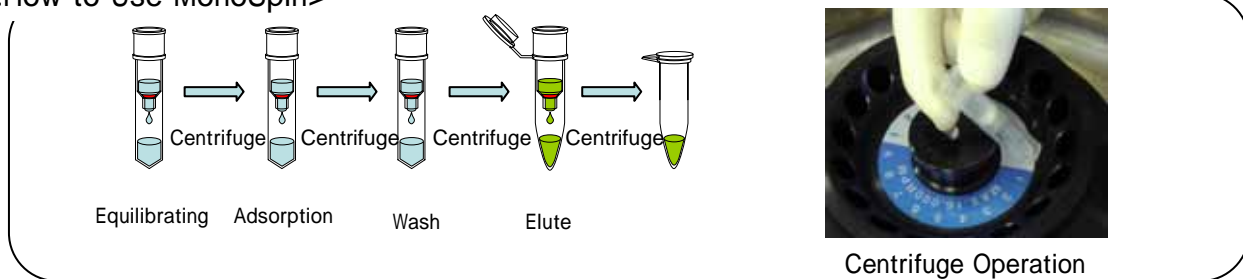
An easy operation by centrifuge

Speedy sample treatment with a superb through pore

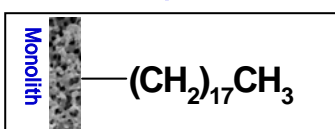
Excellent for the sample for 50 - 800 μ L

Selective purification / enrichment by various functional groups

<How to Use MonoSpin>

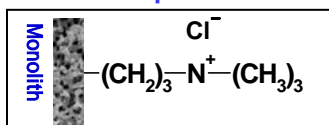


MonoSpin®



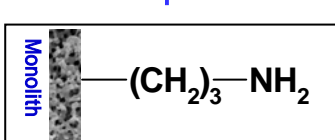
Octadecyl and non polar functional group. Best for the drug extraction in the biotic sample, and desalting and enrichment of peptide samples.

MonoSpin®



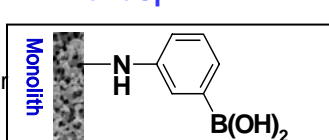
Column bonded with Trimethyl aminopropyl combining both strong anion and weak non polarity. Best for the extraction of acidic drug

MonoSpin®



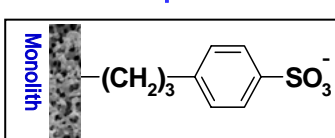
Column bonded with aminopropyl. Optimal for the enrichment of sugar chain and/or hydrophobic compounds by HILIC mode.

MonoSpin®



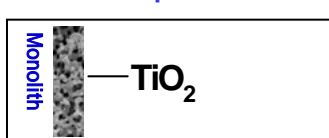
Highly specific column combined with phenyl boric acid. Excellent for the selective extraction of cis diol compounds, such as catechol amine

MonoSpin®



Column bonded with propyl benzene sulfone acid combining both strong cation and non polarity. Optimal for the extraction of base drug

MonoSpin®



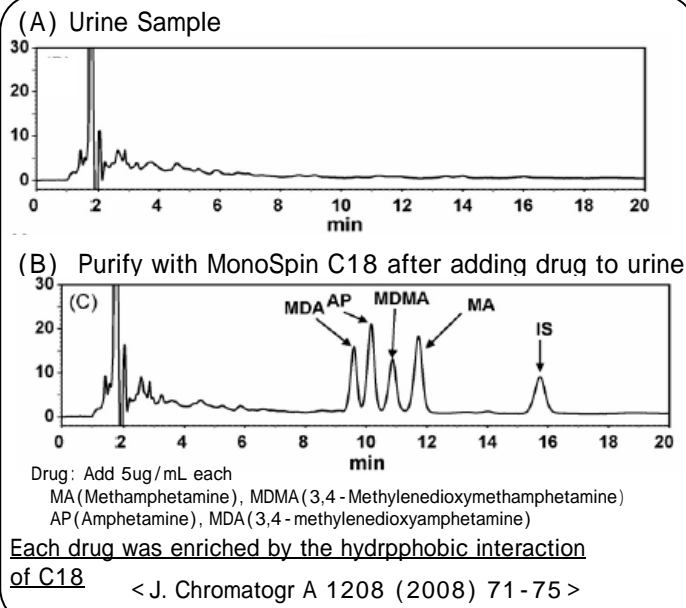
Monolith skeleton coated with dioxide titanium. Excellent for the enrichment of phosphopeptides

Product Information

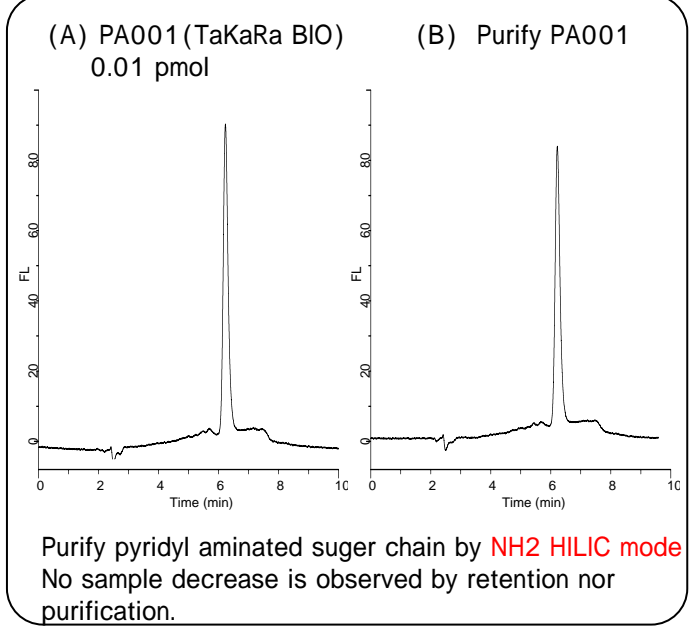
Description	Qty	Cat.No.
MonoSpin C18	50	5010-21700
	100	5010-21701
MonoSpin NH2	50	5010-21710
	100	5010-21711
MonoSpin SCX	50	5010-21725
	100	5010-21726
MonoSpin SAX	50	5010-21720
	100	5010-21721
MonoSpin PBA	50	5010-21715
	100	5010-21716
MonoSpin TiO	50	5010-21705
	100	5010-21706

[Application]

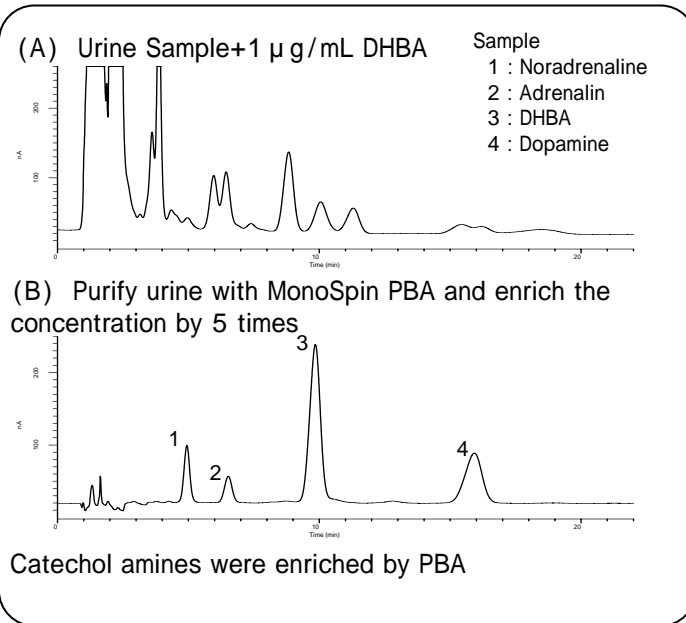
Drug in Urine (MonoSpin® C18)



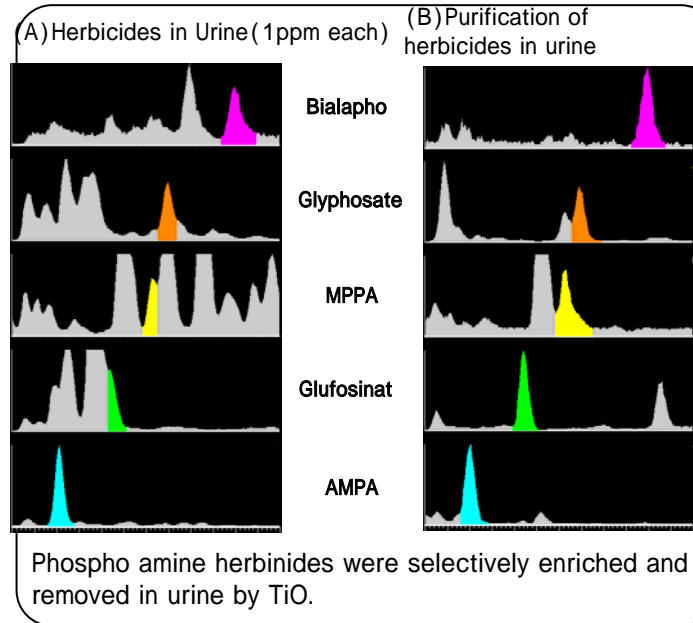
Pyridyl Aminated Sugar Chain (MonoSpin® NH2)



Catechol Amines in Urine (MonoSpin® PBA)



Phospho Amine Herbicides in Urine (MonoSpin® TiO)



GL Sciences Inc.

22-1 Nishishinjuku 6-chome, Shinjuku-ku, Tokyo 163-1130, Japan

TEL: +81-3-5323-6620

Fax: +81-3-5323-6621

www.glsciences.com