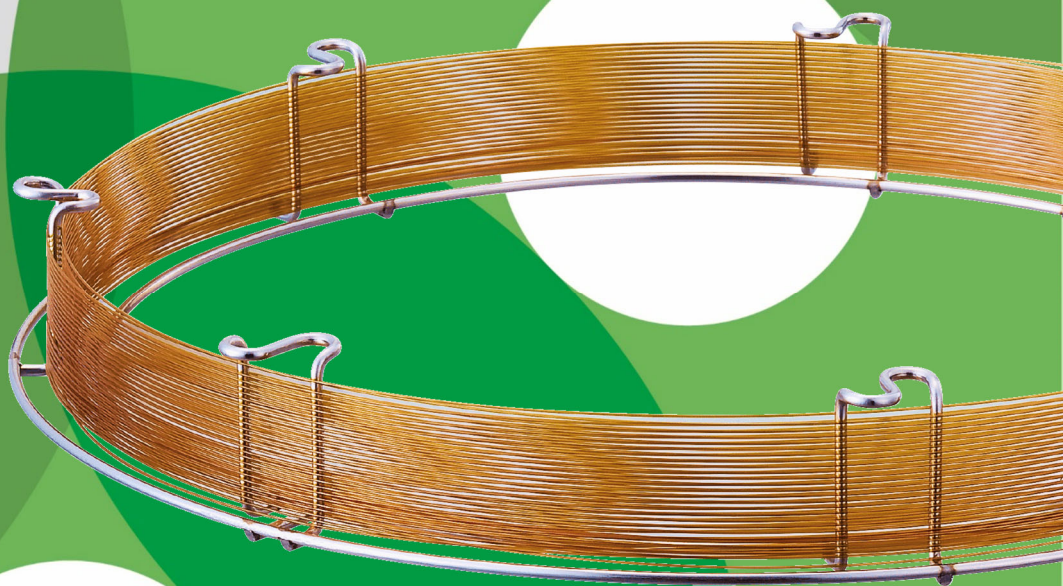




GC•GC/MS Capillary Columns

Dedicated column for ethanol analysis specified in pharmacopoeias

InertCap 624 for Ethanol



Dedicated column for USP "Alcohol", EP "Ethanol (96 percent)", JP "Ethanol", "Anhydrous Ethanol" and "Ethanol for Disinfection"

InertCap 624 for Ethanol

InertCap 624 for Ethanol is a dedicated column for the following pharmacopoeia tests.

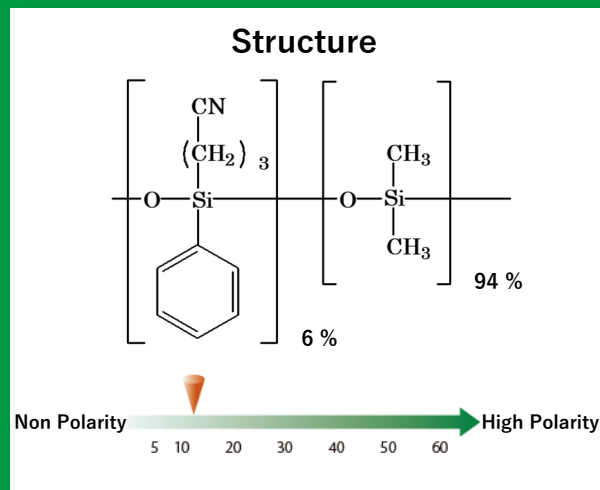
USP: Alcohol

EP: Ethanol (96 percent)

JP: Ethanol, Anhydrous Ethanol and Ethanol for Disinfection

InertCap 624 for Ethanol stably yields the resolution of 1.5 between acetaldehyde and methanol in ethanol specified in the pharmacopoeias.

- 6 % Cyanopropylphenyl - 94 % Dimethylpolysiloxane
- USP Phase G43
- Medium Polarity
- Cross-Linked
- Dedicated column for USP "Alcohol", EP "Ethanol (96 percent)", JP "Ethanol", "Anhydrous Ethanol" and "Ethanol for Disinfection"



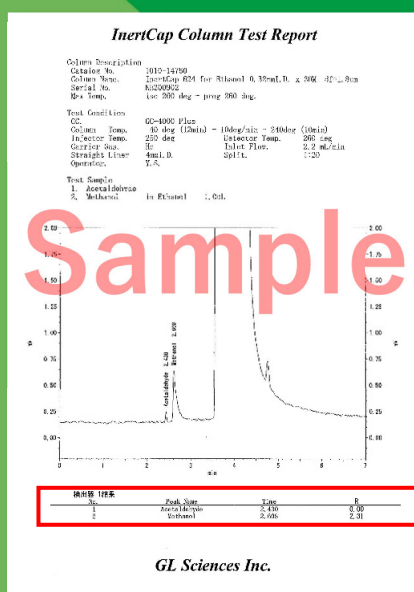
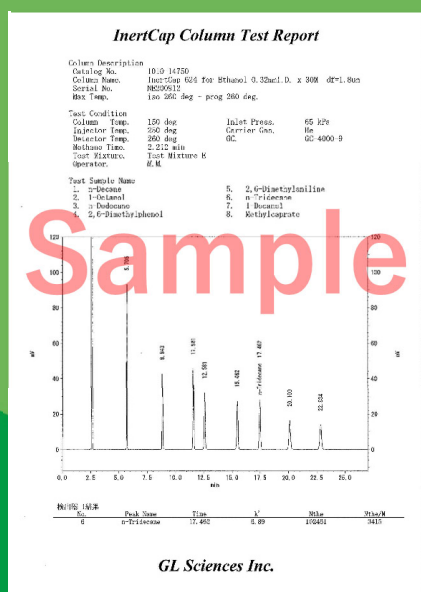
Description	I.D. (mm)	Length (m)	Film Thickness (μm)	Max. Temperature	Cat.No.
InertCap 624 for Ethanol	0.32	30	1.80	iso.260 °C - prog.260 °C	1010-14750

Shipped with a test report on the ethanol analysis of the pharmacopoeias.

The GC and GC/MS capillary columns of GL Sciences includes a pre-shipment inspection report that describes the number of theoretical plates (N) and coating efficiencies (CE) to guarantee stable and high quality. In addition to the regular pre-shipment inspection report, InertCap 624 for Ethanol is shipped with a test report on the ethanol analysis of the pharmacopoeias, where the resolution between acetaldehyde and methanol is described.

Pre-shipment inspection report

Test report on the ethanol analysis of the pharmacopoeias*

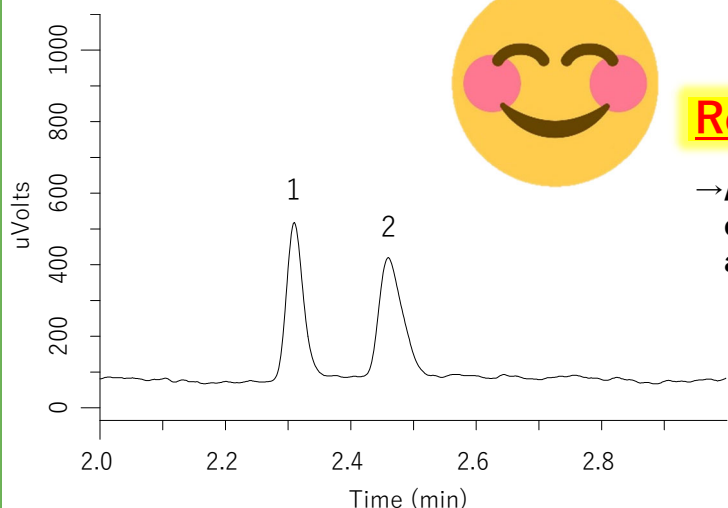


The resolution between acetaldehyde and methanol is described!

* : The test report on the ethanol analysis only guarantees the resolution at the shipment. Peak intensities are not guaranteed.

Comparison of InertCap 624 for Ethanol and competitors under the conditions of the ethanol analysis

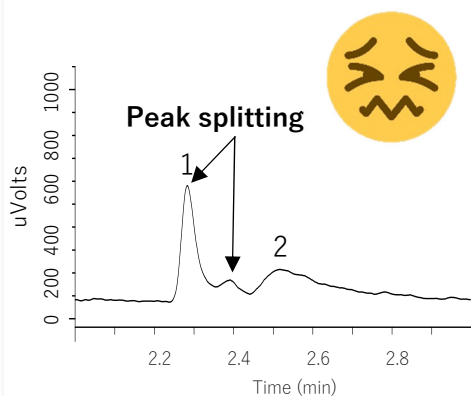
InertCap 624 for Ethanol



Column A

Resolution : N/D

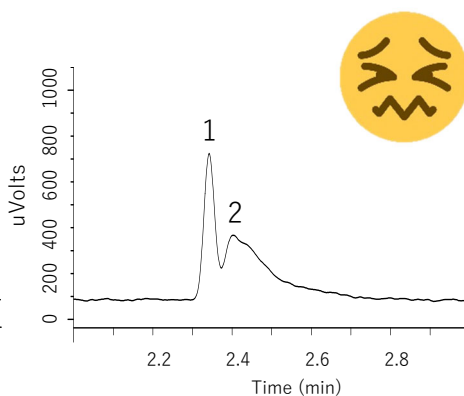
→ Resolution below requirement



Column B

Resolution : 0.52

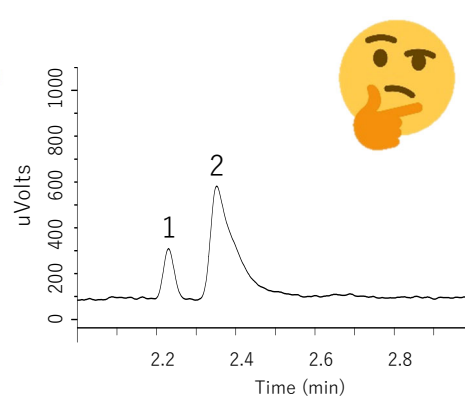
→ Resolution below requirement



Column C

Resolution : 1.57

→ Resolution just above requirement. Continued use may be difficult.



System : GC-FID
Col. Size : 0.32 mm I.D. × 30 m df = 1.80 μm
Col. Temp. : 40 °C (12 min) - 10 °C/min - 240 °C (10 min)
Carrier Gas : He, 35 cm/sec
Injection : 200 °C, Split 20:1
Detection : 280 °C
Sample Size : 1 μL

1. Acetaldehyde
2. Methanol

GL Sciences disclaims any and all responsibility for any injury or damage which may be caused by this data directly or indirectly. We reserve the right to amend this information or data at any time and without any prior announcement.

GL Sciences Inc. Japan

22-1 Nishishinjuku 6-chome
Shinjuku-ku, Tokyo
163-1130, Japan

Phone: +81-3-5323-6620
Fax: +81-3-5323-6621
Email: world@glsc.co.jp
Web: www.glsciences.com

GL Sciences Inc. USA

4733 Torrance Blvd. Suite 255
Torrance, CA 90503
USA

Phone: +1-310-265-4424
Fax: +1-310-265-4425
Email: info@glsciencesinc.com
Web: www.glsciencesinc.com

GL Sciences B.V.

Dillenburgstraat 7C
5652AM, Eindhoven
The Netherlands

Phone: +31-40-254-9531
Email: info@glsciences.eu
Web: www.glsciences.eu

GL Sciences (Shanghai) Limited

Tower B, Room 2003
Far East International Plaza
No.317 Xianxia Road, Changning District
Shanghai, China 200051

Phone: +86-21-62782272
Email: contact@glsciences.com.cn
Web: www.glsciences.com.cn



International Distributors

Visit our Website at www.glsciences.com/distributors

Published in Japan, March 24, 2021 (PDF)

AA0955-20210127PDF